



THE CLASSIC
STEAM EXPERIENCE
2025



WELCOME ABOARD

Welcome to the 2025 edition of our Directory offering a brief overview of classic steam experience tours operated by Saphos Trains. For full information and further details please refer to our website www.saphostrains.com



EXPERIENCES

We are delighted to present an exclusive programme of steam hauled excursions to transport the discerning traveller to interesting and varied destinations in luxurious comfort and style. Being the custodians of numerous immaculately restored world-famous steam engines we are pleased to provide an exciting series of trains offering trips in fabulous vintage carriages, refurbished to an exacting standard and reminiscent of the great golden days of railway travel.

DINING & HOSPITALITY

Whether you opt for our exceptional Pullman Dining with the balance of the finest regional food and drink or First Class with that edge of luxury, comfort and style, the journey and destination all carry equal importance. We guarantee you will be served by our solicitous stewards, while the most stunning British scenery gently passes by.



DESTINATIONS

Our excursions take you to some of Britain's most fascinating places and travel through spectacular scenery. Choose from trips to heritage cities like Bath, York and Cardiff, or head for the country's beautiful fells, moors and coasts. Wherever you go, you'll arrive in style.



ONBOARD

All tours will be hauled by one of our immaculately restored world-famous steam locomotives including:

LMS 46100 'ROYAL SCOT'

SOUTHERN 34046 'BRAUNTON'

BR 70000 'BRITANNIA'

LNER 60007 'SIR NIGEL GRESLEY'

LNER 60532 'BLUE PETER'

FIRST CLASS (NON DINING)

Seating is at tables of 4 or 2 with wide seats and panoramic windows and includes complimentary tea/coffee and light snacks, accompanied with a morning glass of Bucks Fizz and afternoon glass of sparkling wine. You may bring on board your own picnic hamper and drinks for consumption during the journey.

PULLMAN DINING

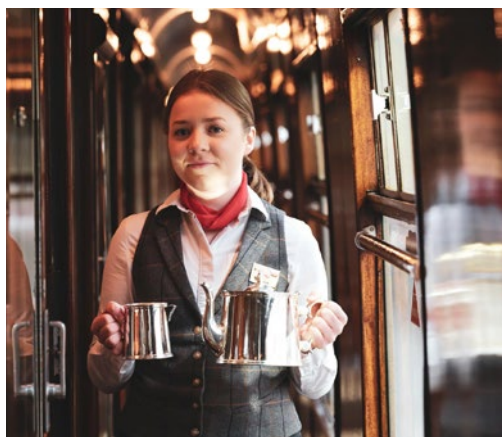
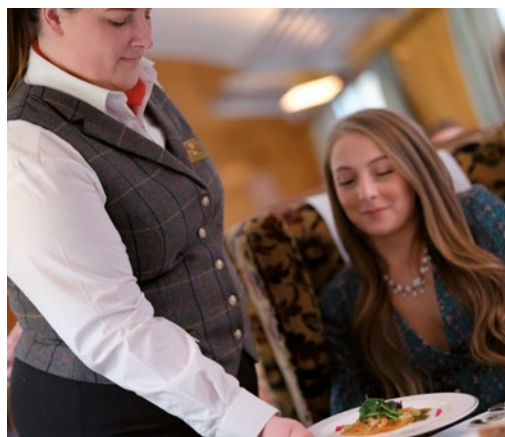
Seating is in our beautifully restored wood panelled vintage carriages at tables of 4 or 2 laid with crisp linen and fully dressed in fine crockery, fresh flowers, and glassware. The day starts as you settle into your seat with a glass of chilled bucks' fizz, followed by a full English breakfast and late morning tea/coffee service with pastries prior to the arrival at our destination. Following an afternoon sightseeing break, you will be welcomed aboard by your

attentive liveried steward and offered a refreshing glass of chilled champagne and selection of canapes as you relax in anticipation of the gastronomic journey ahead. A sumptuous five course seasonal dinner, created by our Executive Chef, will be served including the Great British cheese board, biscuits, and chutneys – all accompanied by our Sommelier's choice of a half-bottle of wine per person. The memorable journey concludes with a service of coffee and homemade petits fours.

TICKETS & TIMINGS

The departure/arrival times shown in this publication and our website are approximate, based on the best information available when the tour was first planned so they should be treated as a rough guide only. However, please be aware that these timings can vary considerably when the confirmed timings are received from Network Rail and we are unable to consider a cancellation, refund or transfer due to the confirmed timings being different to the approximate ones previously advised. Travel documents and tickets will be sent to you by email usually no later than 7 days prior to departure.

For more information and to book online please visit: www.saphostrains.com or for general enquiries call 0800 038 5320



OUR IMMACULATELY RESTORED WORLD-FAMOUS STEAM LOCOMOTIVES



46100 'ROYAL SCOT'

Built in 1927, 'Royal Scot' was the flagship engine of the LMS and in 1933 was selected to travel to the USA for the Century of Progress Exposition. Complete with a set of carriages she was displayed in Chicago, travelled throughout the country, and even crossed the Rocky Mountains.



34046 'BRAUNTON'

Built by the Southern Railway in 1946, 'Braunton', a member of the West Country class, was designed to work some of the fastest and most celebrated trains on the South coast including the Bournemouth Belle and Atlantic Coast Express.



70000 'BRITANNIA'

The first of its class of 55 Pacific locomotives built by British Railways, 'Britannia' entered service in 1951 and worked crack express trains from London to East Anglia. In 1952 she had the honour of hauling the funeral train of King George VI from Kings Lynn to London and in 2012 the Royal train with HRH Prince Charles on board.



60007 'SIR NIGEL GRESLEY'

Built at Doncaster in 1937 to haul the crack express trains operating between London and Edinburgh, 60007 was named after her designer and is now one of only six A4 Pacific's in existence. She had the honour of hauling the Royal Train in 1956 and in 1959 gained the post-war speed record for steam having attained 112mph.



5029 'NUNNEY CASTLE'

Nunney Castle was completed at Swindon Works in May 1934 as No. 5029. It is one of a class of 171 locomotives built between 1923 and 1950. The design of the 'Castle' was based on a previous GWR locomotive the 'Star'. She is currently being overhauled and is scheduled to start service in 2021.



60532 'BLUE PETER'

Blue Peter is the last remaining L.N.E.R. Class A2 Pacific and was one of the most powerful express passenger locomotives in the UK. She was one of 15 of the class designed by Arthur H Peppercorn and entered service in 1948 just weeks after the amalgamation of the Big Four railway companies into the newly nationalised British Railways.

GOLDEN ARROW

WEDNESDAY 26 MARCH - DEPARTING FROM

PETERBOROUGH (05.50/22.45) / MARCH (06.10/22.25) / ELY (06.30/22.05)
CAMBRIDGE (06.50/21.45) / ROYSTON (07.25/21.25) / LETCHWORTH (07.50/21.10)
STEVENAGE (08.00/21.00) / WELWYN GARDEN CITY (08.10/20.50) / POTTERS BAR (08.20/20.40)

WEDNESDAY 2 APRIL - DEPARTING FROM

COVENTRY (05.40/23.15) / RUGBY (06.00/22.45) / LONG BUCKBY (06.15/22.30)
NORTHAMPTON (06.30/22.15) / MILTON KEYNES (06.50/21.45)
LEIGHTON BUZZARD (07.00/21.30) / HEMEL HEMPSTEAD (07.25/21.15)
WATFORD JUNCTION (07.40/21.00)

WEDNESDAY 7 MAY - DEPARTING FROM

BRISTOL TEMPLE MEADS (06.10/23.10) / BATH SPA (06.40/22.50)
BRADFORD ON AVON (07.05/22.35) / TROWBRIDGE (07.15/22.25) / PEWSEY (07.30/21.50)
HUNGERFORD (07.50/21.30) / NEWBURY (08.05/21.10) / READING (08.35/20.45)
MAIDENHEAD (08.55/20.30)

WEDNESDAY 14 MAY - DEPARTING FROM

NORWICH (06.00/23.25) / DISS (06.15/23.10) / STOWMARKET (06.35/22.50)
IPSWICH (06.40/22.40) / MANNINGTREE (07.00/22.30) / COLCHESTER (07.10/22.20)
CHELMSFORD (07.20/22.00) / SHENFIELD (07.30/21.40)

TUESDAY 23 SEPTEMBER - DEPARTING FROM

POOLE (06.00/23.15) / BOURNEMOUTH (06.10/23.05) / BROCKENHURST (06.40/22.35)
SOUTHAMPTON (07.00/22.15) / EASTLEIGH (07.25/21.55) / WINCHESTER (07.45/21.30)
MICHELDEVER (07.55/21.25) / BASINGSTOKE (08.05/21.15) / READING (08.35/20.45)

MONDAY 29 SEPTEMBER - DEPARTING FROM

WORCESTER SHRUB HILL (06.15/23.25) / CHELTENHAM SPA (06.45/22.55)
STONEHOUSE (07.05/22.40) / STROUD (07.15/22.30) / KEMBLE (07.35/22.15)
SWINDON (08.00/21.55) / DIDCOT PARKWAY (08.25/21.35) / TILEHURST (08.40/21.25)
MAIDENHEAD (09.00/21.00)

FIRST CLASS FROM £220 / PULLMAN DINING FROM £425

Guaranteed window tables for 2 are available at a supplement of £50 or £125 per person in
First Class & Pullman Dining

BOOK ONLINE WWW.SAPHOSTRAINS.COM
FOR GENERAL ENQUIRIES CALL 0800 038 5320
CLICK ON THE DATE TO VIEW ONLINE



This is a train with a real 'wow' factor offering a circular steam tour over the same route as the legendary 'Golden Arrow' boat train. Features include the journey through the picturesque Garden of England and around the beautiful Kent coast with the impressive white cliffs towering above the train – the highlight of the day being an afternoon break for sightseeing in historic Canterbury.

After making our way through the London suburbs we continue into open countryside and through the pretty Garden of England, rich with an abundance of Oast Houses and Hop Fields. Passing Ashford, we soon arrive at historic Canterbury for an afternoon break of about three hours in this city of narrow streets and ancient buildings, the incomparable cathedral, setting for so many dramatic events stand at its heart.

Travelling through the beautiful Kent countryside the engine works hard to haul the train over the stiff gradients along the coastal line through Dover and Folkestone with dramatic white cliffs and spectacular views across the English Channel. Continuing along the high-speed route through Tonbridge recreating the former 'Golden Arrow' from the glory days of rail travel.



THE LAKELANDER

SATURDAY 5 APRIL - DEPARTING FROM

LLANDUDNO JUNCTION (07.10/22.40) / COLWYN BAY (07.20/22.30) / RHYL (07.40/22.10)
FLINT (08.00/21.50) / CHESTER (08.15/21.35) / FRODSHAM (08.30/21.20)
WARRINGTON BANK QUAY (08.50/21.00) / PRESTON (09.20-09.58/20.30)

SATURDAY 26 APRIL - DEPARTING FROM

RUGBY (05.50/23.45) / COVENTRY (06.05/23.25) / BIRMINGHAM INTERNATIONAL (06.20/23.10)
TAME BRIDGE PARKWAY (06.50/22.45) / WOLVERHAMPTON (07.10/22.30)
PENKRIDGE (07.20/22.20) / STAFFORD (07.40/22.05) / CREWE (08.20/21.40)
PRESTON (09.20/20.30)

SATURDAY 14 JUNE - DEPARTING FROM

LEICESTER (06.35/23.15) / NARBOROUGH (06.45/23.05) / HINCKLEY (06.55/22.55)
NUNEATON (07.05/22.45) / TAMWORTH (07.20/22.30) / LICHFIELD TRENT VALLEY (07.30/22.20)
RUGELEY TRENT VALLEY (07.40/22.10) / CREWE (08.20/21.30) / PRESTON (09.20/20.30)

SATURDAY 5 JULY - DEPARTING FROM

HEREFORD (06.20/23.30) / LEOMINSTER (06.40/23.10) / LUDLOW (07.00/22.50)
CRAVEN ARMS (07.10/22.40) / CHURCH STRETTON (07.20/22.30) / SHREWSBURY (07.40/22.10)
WHITCHURCH (08.00/21.50) / CREWE (08.20/21.30) / WARRINGTON BANK QUAY (08.50/21.00)
PRESTON (09.20/20.30)

SATURDAY 26 JULY - DEPARTING FROM

YORK (06.20/23.25) / LEEDS (06.50/22.55) / DEWSBURY (07.10/22.40) / BRIGHOUSE (07.25/22.25)
HEBDEN BRIDGE (07.40/22.10) / TODMORDEN (07.50/22.00) / ROCHDALE (08.05/21.45)
MANCHESTER VICTORIA (08.20/21.30) / BOLTON (08.40/21.10) / CHORLEY (09.00/20.50)
PRESTON (09.20/20.30)

SATURDAY 16 AUGUST - DEPARTING FROM

NOTTINGHAM (05.40/23.55) / ATTENBOROUGH (05.50/23.50) / DERBY (06.10/23.30)
BELPER (06.20/23.15) / CHESTERFIELD (06.40/23.00) / CHINLEY (07.15/22.20)
STOCKPORT (07.30/22.10) / MANCHESTER PICCADILLY (08.20/21.30) / PRESTON (09.20/20.30)

FIRST CLASS FROM £220 / PULLMAN DINING FROM £425

Guaranteed window tables for 2 are available at a supplement of £50 or £125 per person in
First Class & Pullman Dining

BOOK ONLINE WWW.SAPHOSTRAINS.COM
FOR GENERAL ENQUIRIES CALL 0800 038 5320
CLICK ON THE DATE TO VIEW ONLINE



Enjoy a fabulous steam hauled day tour offering spectacular views of the Cumbrian mountains and high Pennines as we climb over the Lakeland fells to the historic border city of Carlisle for a lunchtime sightseeing break and return around the longest coastal line in Britain with splendid views across the Irish Sea and Morecambe Bay. .

Travelling through the county town of Lancaster our steam locomotive works hard to climb the severe gradients of Grayrigg and Shap with splendid views over the Cumbrian Fells before we descend to Penrith, and head for Carlisle. There will be around two hours available to explore this ancient border city with its castle, cathedral, Tullie House Museum, and shopping centre.

Our return journey takes the scenic coastal route around the Cumbrian Coast running along the shoreline through Workington with spectacular cliff edge views as we journey south and the Isle of Man visible across the Irish Sea. We run close to the shoreline passing Sellafield, and Ravenglass. After Ulverston, we curve along the edge of Morecambe Bay through Grange-over-Sands. There are views across the bay as we cross the lengthy Kent Viaduct at Arnside and approach Carnforth and a fast run homeward along the west coast main line.



ENGLISH RIVIERA EXPRESS

SATURDAY 3 & 17 & 24 MAY

SATURDAY 7 JUNE

SATURDAY 12 & 19 JULY

SATURDAY 2 & 23 & 30 AUGUST

SATURDAY 6 SEPTEMBER

PLEASE SEE OVERLEAF FOR DEPARTING STATIONS



We recreate one of the great holiday trains of the golden age of railway travel for a steam hauled journey through Somerset and around the beautiful Devon coast with time available to discover the many charms of the pretty 'English Riviera' resort of Dartmouth.

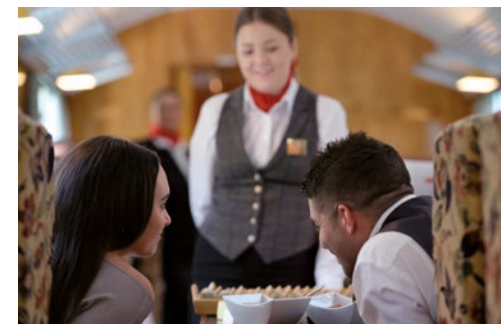
Travelling through the remote Blackdown hills and along the Exe Valley to Exeter, before heading beside the estuary with its pretty fishing boats and stunning views across to Exmouth and the Jurassic coast. Continuing past Powderham Castle and along the famous sea wall line we race through tunnels and cuttings of red rock and beside beaches and coves with the sea keeping company with the train.

At Paignton we join the steeply graded heritage line and travel alongside the beautiful River Dart with views of HMS Britannia – not a ship but the college that has trained generations of naval officers. We soon arrive at the riverside terminus at Kingswear, where it is a short crossing on the ferry (price included) to the historic and romantic port of Dartmouth – there are antique shops, galleries, and cafes to explore or perhaps take a leisurely cruise on the river Dart. There should be around four hours at leisure before we return in the late afternoon.

FIRST CLASS FROM £220 / PULLMAN DINING FROM £425

Guaranteed window tables for 2 are available at a supplement of £50 or £125 per person in
First Class & Pullman Dining

BOOK ONLINE WWW.SAPHOSTRAINS.COM
FOR GENERAL ENQUIRIES CALL 0800 038 5320
CLICK ON THE DATE TO VIEW ONLINE





ENGLISH RIVIERA EXPRESS

SATURDAY 3 MAY - DEPARTING FROM

POOLE (06.35/22.55) / BOURNEMOUTH (06.50/22.40) / BROCKENHURST (07.20/22.20)
SOUTHAMPTON (07.40/22.00) / EASTLEIGH (08.00/21.45) / SALISBURY (09.00/20.50)
WARMINSTER (09.25/20.30) / WESTBURY (09.40/20.05)

SATURDAY 17 MAY - DEPARTING FROM

WOKING (06.55/22.25) / GUILDFORD (07.05/22.15) / HASLEMERE (07.25/21.55)
PETERSFIELD (07.40/21.40) / HAVANT (07.55/21.25) / COSHAM (08.05/21.15)
FAREHAM (08.15/21.05) / EASTLEIGH (08.35/20.45)

SATURDAY 24 MAY - DEPARTING FROM

SHREWSBURY (05.50/22.50) / CHURCH STRETTON (06.15/22.30) / CRAVEN ARMS (06.30/22.15)
LUDLOW (06.40/22.05) / LEOMINSTER (07.00/21.55) / HEREFORD (07.25/21.40)
ABERGAVENNY (07.50/21.10) / CWMBRAN (08.10/20.55)
SEVERN TUNNEL JUNCTION (08.35/20.35)

SATURDAY 7 JUNE - DEPARTING FROM

NORTHAMPTON (05.40/22.35) / MILTON KEYNES (06.00/22.15)
LEIGHTON BUZZARD (06.15/22.00) / BERKHAMSTED (06.25/21.50)
HEMEL HEMPSTEAD (06.35/21.40) / WATFORD JCT (06.45/21.30)

SATURDAY 12 JULY - DEPARTING FROM

THREE BRIDGES (06.15/23.05) / HAYWARDS HEATH (06.25/22.55) / BURGESS HILL (06.35/22.45)
HOVE (06.50/22.30) / WORTHING (07.10/22.10) / BARNHAM (07.30/21.50)
CHICHESTER (07.40/21.40)

SATURDAY 19 JULY - DEPARTING FROM

CREWE (05.45/23.55) / STAFFORD (06.10/23.30) / PENKRIDGE (06.20/23.15)
WOLVERHAMPTON (06.35/23.15) / SANDWELL & DUDLEY (06.45/22.55)
BIRMINGHAM NEW STREET (06.55/22.45) / BARNT GREEN (07.35/22.10)
WORCESTERSHIRE PARKWAY (008.05/21.45) / CHELTENHAM SPA (08.25/21.25)
CAM & DURSLEY (09.10/20.40) / BRISTOL PARKWAY (09.20/20.25)

SATURDAY 2 AUGUST - DEPARTING FROM

WOLVERHAMPTON (06.40/23.35) / TAME BRIDGE PARKWAY (06.55/23.20)
STOURBRIDGE JUNCTION (07.35/22.45) / KIDDERMINSTER (07.45/22.30)
DROITWICH SPA (08.00/22.10) / WORCESTER SHRUB HILL (08.15/21.50)
CHELTENHAM SPA (08.40/21.25) / CAM & DURSLEY (09.15/20.50)
BRISTOL PARKWAY (09.35/20.25)

SATURDAY 23 AUGUST - DEPARTING FROM

SLOUGH (07.40/22.15) / MAIDENHEAD (07.50/22.05) / READING (08.10/21.45)
NEWBURY (08.45/21.10) / HUNGERFORD (09.00/20.40) / PEWSEY (09.20/20.20)
WESTBURY (09.35/20.05)

SATURDAY 30 AUGUST - DEPARTING FROM

BEDFORD (05.35/23.25) / LUTON (06.00/23.00) / ST ALBANS (06.15/22.40)
SLOUGH (07.30/21.20) / MAIDENHEAD (07.40/21.10) / READING (07.55/20.55)

SATURDAY 6 SEPTEMBER - DEPARTING FROM

HIGH WYCOMBE (05.40/23.00) / PRINCES RISBOROUGH (05.55/2.45)
HADDENHAM & THAME (06.05/22.30) / BICESTER VILLAGE (06.20/22.15)
OXFORD PARKWAY (06.35/22.05) / OXFORD (06.45/21.55) / SWINDON (07.45/21.10)
CHIPPENHAM (08.05/20.40) / BATH SPA (09.20/20.25) / BRISTOL TEMPLE MEADS (09.35/20.05)

FIRST CLASS FROM £220 / PULLMAN DINING FROM £425

Guaranteed window tables for 2 are available at a supplement of £50 or £125 per person in
First Class & Pullman Dining

BOOK ONLINE WWW.SAPHOSTRAINS.COM
FOR GENERAL ENQUIRIES CALL 0800 038 5320
CLICK ON THE DATE TO VIEW ONLINE



WELSH MARCHES EXPRESS

WEDNESDAY 28 MAY - DEPARTING FROM

PAIGNTON (06.10/23.30) / TORQUAY (06.20/23.20) / NEWTON ABBOT (06.30/23.10)
DAWLISH (06.40/23.00) / EXETER ST DAVID'S (07.10/22.30) / TIVERTON PARKWAY (07.25/22.15)
TAUNTON (07.40/22.00) / BRIDGWATER (07.50/21.50) / BRISTOL TEMPLE MEADS (09.10/20.30)

WEDNESDAY 27 AUGUST - DEPARTING FROM

BOURNEMOUTH (05.20/22.50) / BROCKENHURST (05.45/22.20)
SOUTHAMPTON (06.05/22.05) / EASTLEIGH (06.30/21.50) / SALISBURY (07.15/21.05) / WARMIN-
STER (07.35/20.40) WESTBURY (07.50/20.20) / BRISTOL TEMPLE MEADS (09.10/19.30)

THURSDAY 18 SEPTEMBER - DEPARTING FROM

WOKING (06.10/23.30) / FARNBOROUGH MAIN (06.20/23.20) / BASINGSTOKE (06.40/23.00)
ANDOVER (07.00/22.40) / SALISBURY (07.20/22.20) / WESTBURY (07.50/21.20)
BRADFORD ON AVON (08.10/21.00) / BRISTOL TM (09.10/20.30)



Traversing the breath-taking beauty of the Welsh Marches route our steam hauled train offers a totally unique day out as we travel through the rolling hills of the pretty Shropshire countryside dividing England and Wales for a visit to historic Shrewsbury.

Passing through the Severn Tunnel we take the fast line to Newport where we cross the river Usk with superb views of the Brecon Beacons as the black mountains tower above the train. Continuing through the historic towns of Hereford and Ludlow we pass magnificent Stokesay Castle and through Church Stretton with outstanding views of the Long Mynd – we then arrive at Shrewsbury for an afternoon break.

SHREWSBURY

Founded by the Saxons and most extensively developed by the Tudors the town lies within a giant loop of the River Severn, and is famed for its castle, spires, abbey, parklands, and half-timbered medieval houses. There are gorgeous black & white buildings, remaining just the way they have always been. Shrewsbury is stunning historic town with over 660 listed buildings and some very strange street names - Dogpole and Mardol, Gullet Passage and Grope Lane. There are beautiful walks beside the river and perhaps take a boat trip or just unwind in the stunning parks and gardens



FIRST CLASS FROM £220 / PULLMAN DINING FROM £425

Guaranteed window tables for 2 are available at a supplement of £50 or £125 per person in
First Class & Pullman Dining

BOOK ONLINE WWW.SAPHOSTRAINS.COM
FOR GENERAL ENQUIRIES CALL 0800 038 5320
CLICK ON THE DATE TO VIEW ONLINE

THE WHITE ROSE

FRIDAY 26 SEPTEMBER - DEPARTING FROM

HEREFORD (06.00/23.45) / LEOMINSTER (06.25/23.25) / LUDLOW (06.35/23.15)
CRAVEN ARMS (06.45/23.05) / CHURCH STRETTON (06.55/22.55) / SHREWSBURY (07.10/22.40)
WHITCHURCH (07.30/22.20) / CREWE (08.15/21.30) / WARRINGTON BANK QUAY (08.50/20.50)
MANCHESTER VICTORIA (09.50/20.00)

THURSDAY 2 OCTOBER - DEPARTING FROM

NORTHAMPTON (05.50/23.55) / LONG BUCKBY (06.00/23.45) / RUGBY (06.10/23.35)
NUNEATON (06.25/23.20) / TAMWORTH (06.40/23.05) / LICHFIELD TRENT VALLEY (06.50/22.55)
RUGELEY TRENT VALLEY (07.00/22.45) / STAFFORD (07.15/22.30) / CREWE (08.15/21.30)
WARRINGTON BANK QUAY (08.50/20.50) / MANCHESTER VICTORIA (09.50/20.00)



FIRST CLASS FROM £220 / PULLMAN DINING FROM £425

Guaranteed window tables for 2 are available at a supplement of £50 or £125 per person in
First Class & Pullman Dining

BOOK ONLINE WWW.SAPHOSTRAINS.COM
FOR GENERAL ENQUIRIES CALL 0800 038 5320
CLICK ON THE DATE TO VIEW ONLINE



Enjoy a fabulous day tour travelling through the impressive Pennines over two very different routes with the outward journey taking the spectacular Vale of Edale through the Peak District National Park to historic York for a sightseeing afternoon break. We return through Wakefield and the rugged Calder Valley.

Travelling through Manchester our train leaves Victoria Station with the taxing climb up Miles Platting bank and threads its way through the suburbs to join the former Midland Railway line across the Peak District. This route is spectacularly scenic and encompasses several long tunnels, before passing through Sheffield. We then head northwards through Meadowhall, adjacent to the famous Shopping Centre, and onwards towards Swinton and Pontefract following the East Coast Main Line to York.

Nowhere in England says 'medieval' quite like York. A magnificent circuit of 13th-century walls encloses a medieval spider's web of narrow streets. At its heart lies the immense, awe-inspiring York Minster, one of the most beautiful Gothic cathedrals in the world. York's long history and rich heritage is woven into virtually every brick and beam, and the modern, tourist-oriented city – with attractions including the Jorvik Centre and superb National Railway Museum.

We return in the late afternoon through Wakefield and the true Pennine scenery of the Calder Valley as we pass the preserved Lancashire & Yorkshire railway station at Hebden Bridge thence through Todmorden and Rochdale.



EDINBURGH SUMMER EXPLORER

WEDNESDAY 21 MAY

WEDNESDAY 18 JUNE

WEDNESDAY 16 JULY

WEDNESDAY 30 JULY

WEDNESDAY 13 AUGUST

MONDAY 15 SEPTEMBER

FIRST CLASS FROM £220 / PULLMAN DINING FROM £425

Guaranteed window tables for 2 are available at a supplement of £50 or £125 per person in
First Class & Pullman Dining

BOOK ONLINE WWW.SAPHOSTRAINS.COM
FOR GENERAL ENQUIRIES CALL 0800 038 5320
CLICK ON THE DATE TO VIEW ONLINE



We are pleased to present a brand-new tour for 2025 as our train travels on an enchanting steam hauled journey through the Scottish Lowlands to the very heart of Scotland's capital and Britain's most beautiful city where the afternoon is available for shopping and sightseeing.

We travel north to the border city of Carlisle where our magnificent steam locomotive will be waiting to take us past the Solway Firth and through the beautiful Scottish Lowlands with the highlight of the journey being the steep climb to spectacular for an arrival into Edinburgh Waverley station, and an afternoon break of around 3 hours. The station is located just below one of the UK's most historic and popular shopping areas – Princes Street, with its international stores on one side and the beautiful gardens on the other.

There is something for everyone in this truly enchanting city with numerous attractions all within easy walking distance – perhaps visit the mediaeval

Old Town and take a stroll down the Royal Mile to the Kings Scottish residence, the Palace of Holyrood house, or visit the impressive fortress of Edinburgh Castle set high on a rocky crag, home of the Scottish Crown Jewels and Stone of Destiny. For the more adventurous perhaps take a short taxi ride to the former Royal Yacht Britannia or jump on an open top bus offering a tour of all the major historic sites and attractions.

Returning from Edinburgh in the late afternoon we retrace the spectacular journey over the outward route back to Carlisle where a more modern form of traction is attached for the homeward journey.

EDINBURGH SUMMER EXPLORER

WEDNESDAY 21 MAY - DEPARTING FROM

LEEDS (06.30/22.35) / SHIPLEY (06.40/22.20) / KEIGHLEY (06.50/22.10)X / SKIPTON (07.05/21.50)
HELLIFIELD (07.15/21.40) / SETTLE (07.25/21.30) / KIRKBY STEPHEN (08.05/20.55)
APPLEBY (08.20/20.40) / CARLISLE (09.00/20.00)

WEDNESDAY 18 JUNE - DEPARTING FROM

LIVERPOOL SOUTH PARKWAY (06.05/23.05) / LIVERPOOL LIME STREET (06.30/22.40)
BROAD GREEN (06.30/22.30) / HUYTON (06.40/22.20) / ST HELENS CENTRAL (07.00/22.00)
WIGAN NORTH WESTERN (07.15/21.45) / PRESTON (07.40/21.20) / LANCASTER (08.00/21.00)
OXENHOLME (08.20/20.40) / CARLISLE (09.00/20.00)

WEDNESDAY 16 JULY - DEPARTING FROM

STOKE-ON-TRENT (05.40/23.20) / CONGLETON (05.50/23.10) / MACCLESFIELD (06.00/23.00)
POYNTON (06.20/22.40) / STOCKPORT (06.30/22.30) / MANCHESTER PICCADILLY (06.50/22.10)
BOLTON (07.10/21.50) / CHORLEY (07.25/21.35) / PRESTON (07.40/21.20)
CARLISLE (09.00/20.00)

WEDNESDAY 30 JULY - DEPARTING FROM

AYR (06.50/22.10) / TROON (07.00/22.00) / KILMARNOCK (07.15/21.45)
KIRKCONNEL (07.45/21.15) / DUMFRIES (08.15/20.45) / ANNAN (08.35/20.25)
GRETNA GREEN (08.45/0.15) / CARLISLE (09.00/20.00)

WEDNESDAY 13 AUGUST - DEPARTING FROM

YORK (06.30/22.30) / THIRSK (06.50/22.10) / NORTHALLERTON (07.00/22.00)
DARLINGTON (07.15/21.45) / DURHAM (07.30/21.30) / CHESTER-LE-STREET (07.40/21.10)
METRO CENTRE (07.50/21.00) / HEXHAM (08.15/20.45) / HALTWHISTLE (08.30/20.30)
CARLISLE (09.00/20.00)

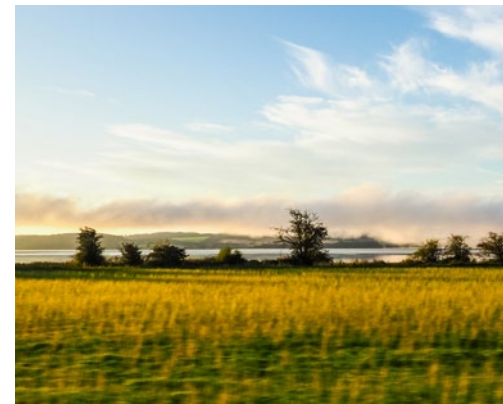
MONDAY 15 SEPTEMBER - DEPARTING FROM

CHESTER (06.30/22.30) / FRODSHAM (06.50/22.10) / WARRINGTON BANK QUAY (07.10/21.50)
WIGAN NORTH WESTERN (07.20/21.40) / LEYLAND (07.30/21.30) / PRESTON (07.40/21.20)
LANCASTER (08.00/21.00) / OXENHOLME (08.20/20.40) / PENRITH (08.40/20.20)
CARLISLE (09.00/20.00)

FIRST CLASS FROM £220 / PULLMAN DINING FROM £425

Guaranteed window tables for 2 are available at a supplement of £50 or £125 per person in
First Class & Pullman Dining

BOOK ONLINE WWW.SAPHOSTRAINS.COM
FOR GENERAL ENQUIRIES CALL 0800 038 5320
CLICK ON THE DATE TO VIEW ONLINE



SETTLE & CARLISLE FELLSMAN

WEDNESDAY 2 JULY
WEDNESDAY 3 SEPTEMBER

DEPARTING FROM
BLACKPOOL NORTH (07.40/20.40) / POULTON-LE-FYLDE (08.00/20.20)
KIRKHAM & WESHAM (08.15/20.05) / PRESTON (08.30/19.50) / BLACKBURN (09.10/19.10)
CLITHEROE (09.35/18.40)

WEDNESDAY 11 JUNE
WEDNESDAY 6 AUGUST

DEPARTING FROM
CREWE (07.00/21.35) / CHESTER (07.40/20.45) / FRODSHAM (07.55/20.30)
WARRINGTON BANK QUAY (08.05/20.15) / WIGAN NORTH WESTERN (08.20/20.00)
EUXTON BALSHAW LANE (08.35/19.45) / BLACKBURN (09.10/19.10) / CLITHEROE (09.35/18.40)



FIRST CLASS FROM £220 / PULLMAN DINING FROM £425

Guaranteed window tables for 2 are available at a supplement of £50 or £125 per person in
First Class & Pullman Dining

BOOK ONLINE WWW.SAPHOSTRAINS.COM
FOR GENERAL ENQUIRIES CALL 0800 038 5320
CLICK ON THE DATE TO VIEW ONLINE



The popular 'Fellsman' runs again in summer 2025 for its 17th season offering a return steam hauled journey on the spectacular 'Settle to Carlisle Railway' as we travel through the Yorkshire Dales and climb high towards the roof of England. With great limestone peaks and deep valleys, the legendary 'Settle to Carlisle' line is a masterpiece of Victorian engineering including the magnificent 24 arch viaduct at Ribbleshead. Time will be available for sightseeing in the historic border city of Carlisle.

The Settle & Carlisle line is known for its magnificent scenery and steep gradient, so our engine will be working hard as we climb to the magnificent Ribbleshead Viaduct with stunning views of the three peaks. Passengers get a marvellous view down Dent Dale as the train emerges from Blea Moor tunnel and approaching Garsdale you will see sweeping views of Wensleydale - with our engine in full flight we climb at 1 in 100 towards the summit of the line at Ais Gill. Travelling on through the lush Eden Valley to the historic border city of Carlisle where we arrive about 13.10. You may choose to stroll between the castle and cathedral or perhaps visit the famous Tullie House Museum – all surrounded by great places to shop, eat, or be entertained so creating the perfect way to spend an afternoon.

Returning from Carlisle about 15.45 we travel over the same spectacular route giving another opportunity to experience the beauty of the high Pennines and pretty Ribbles Valley as our locomotive works hard up the steep and taxing climb of Wilpshire Bank being a fitting end to a perfect day.



THE CHRISTMAS WHITE ROSE

SATURDAY 15 NOVEMBER - DEPARTING FROM

POTTERS BAR (07.25/21.05) / WELWYN GARDEN CITY (07.35/20.55)
STEVENAGE (07.50/20.40) / HITCHIN (08.00/20.30) / ST NEOTS (08.10/20.20)
HUNTINGDON (08.30/20.00) / PETERBOROUGH (09.00/19.30)

TUESDAY 18 NOVEMBER - DEPARTING FROM

ST ALBANS (06.20/22.20) / LUTON (06.40/22.00) / BEDFORD (07.10/21.30)
KETTERING (07.30/21.00) / LEICESTER (08.00/20.30) / MELTON MOWBRAY (08.15/20.15)
OAKHAM (08.30/20.00) / STAMFORD (08.45/19.45) / PETERBOROUGH (09.00/19.30)



FIRST CLASS FROM £220 / PULLMAN DINING FROM £425

Guaranteed window tables for 2 are available at a supplement of £50 or £125 per person in
First Class & Pullman Dining

BOOK ONLINE WWW.SAPHOSTRAINS.COM
FOR GENERAL ENQUIRIES CALL 0800 038 5320
CLICK ON THE DATE TO VIEW ONLINE



Enjoy a fabulous steam hauled day tour travelling through the heart of England and along the East Coast Main Line through Grantham, Newark and Doncaster over the very route used by 'Mallard' in July 1938 to achieve the world speed record of 126mph. The destination is historic York for a sightseeing afternoon break with time to visit the numerous attractions.

Nowhere in England says 'medieval' quite like York especially in the festive season with the famous St Nicholas Market in full swing. A magnificent circuit of 13th-century walls encloses a medieval spider's web of narrow streets and at the heart of the city lies the immense, awe-inspiring Minster, one of the most beautiful Gothic cathedrals in the world. York's long history and rich heritage is woven into the modern, tourist-oriented city – with attractions including the Jorvik Centre and superb National Railway Museum.



BATH CHRISTMAS MARKET

TUESDAY 2 DECEMBER - DEPARTING FROM

RUGBY (06.10/22.40) / LONG BUCKBY (06.20/22.30) / NORTHAMPTON (06.40/22.20)
MILTON KEYNES (07.00/22.00) / LEIGHTON BUZZARD (07.20/21.40)
HEMEL HEMPSTEAD (07.40/21.20) / WATFORD JUNCTION (07.50/21.10)

THURSDAY 4 DECEMBER - DEPARTING FROM

DORRIDGE (06.20/22.50) / WARWICK PARKWAY (06.30/22.40) / LEAMINGTON SPA (06.40/22.30)
BANBURY (06.50/22.15) / BICESTER NORTH (07.10/22.00) / HADDENHAM & THAME (07.20/21.50)
PRINCES RISBOROUGH (07.30/21.40) / HIGH WYCOMBE (07.40/21.30) / BEACONSFIELD (07.50/21.20)
GERRARDS CROSS (08.00/21.10)

SATURDAY 6 DECEMBER - DEPARTING FROM

ELY (06.00/23.20) / BURY ST EDMUNDS (06.30/22.50) / STOWMARKET (06.50/22.30)
IPSWICH (07.05/22.15) / MANNINGTREE (07.20/22.00) / COLCHESTER (07.35/21.45)
CHELMSFORD (08.05/21.20) / SHENFIELD (08.20/21.05)

FRIDAY 12 DECEMBER - DEPARTING FROM

THREE BRIDGES (08.00/21.25) / HAYWARDS HEATH (08.15/21.10) / BURGESS HILL (08.30/20.50)
HOVE (08.50/20.30) / SHOREHAM BY SEA (09.05/20.20) / WORTHING (09.25/20.05)
BARNHAM (09.45/19.45) / CHICHESTER (10.00/19.30)



This is a unique steam hauled tour offering a journey through the rolling hills and gentle scenery of beautiful Wiltshire, then along the glorious countryside of the Avon Valley to visit the elegant Georgian city of Bath for an afternoon three-hour break at this festive time of year with the famous Christmas Market in full swing.

BATH SPA

At Christmas the beautiful Somerset city comes alive with its unique Christmas market where over 150 chalet style stalls offer quality products and brilliant gift ideas. The famous Abbey and Roman Baths provide an amazing backdrop to the city's festive event offering seasonal shopping, fine foods with stalls showcasing the talents of retailers from Britain and the Continent. Bath Minster also provides regular carol concerts throughout the day.



FIRST CLASS FROM £220 / PULLMAN DINING FROM £425

Guaranteed window tables for 2 are available at a supplement of £50 or £125 per person in
First Class & Pullman Dining

BOOK ONLINE WWW.SAPHOSTRAINS.COM
FOR GENERAL ENQUIRIES CALL 0800 038 5320
CLICK ON THE DATE TO VIEW ONLINE



2025 TOURS

For your convenience, please find a list of 2025 tours in date order.
For further information and full details of each tour please refer to
our website www.saphostrains.com



WED 26 MARCH	GOLDEN ARROW
WED 2 APRIL	GOLDEN ARROW
SAT 5 APRIL	THE LAKELANDER
SAT 26 APRIL	THE LAKELANDER
SAT 3 MAY	ENGLISH RIVIERA
WED 7 MAY	GOLDEN ARROW
WED 14 MAY	GOLDEN ARROW
SAT 17 MAY	ENGLISH RIVIERA
WED 21 MAY	EDINBURGH SUMMER
WED 23 MAY	ENGLISH RIVIERA
WED 28 MAY	WELSH MARCHES
SAT 7 JUNE	ENGLISH RIVIERA
WED 11 JUNE	FELLSMAN
SAT 14 JUNE	THE LAKELANDER
WED 18 JUNE	EDINBURGH SUMMER EXPLORER
WED 2 JULY	FELLSMAN
SAT 5 JULY	THE LAKELANDER
SAT 12 JULY	ENGLISH RIVIERA
WED 16 JULY	EDINBURGH SUMMER EXPLORER
SAT 19 JULY	ENGLISH RIVIERA
SAT 26 JULY	THE LAKELANDER
WED 30 JULY	EDINBURGH SUMMER EXPLORER
SAT 2 AUGUST	ENGLISH RIVIERA
WED 6 AUGUST	FELLSMAN
WED 13 AUGUST	EDINBURGH SUMMER EXPLORER

SAT 16 AUGUST	THE LAKELANDER
SAT 23 AUGUST	ENGLISH RIVIERA
WED 27 AUGUST	WELSH MARCHES
SAT 30 AUGUST	ENGLISH RIVIERA
WED 3 SEPTEMBER	FELLSMAN
SAT 6 SEPTEMBER	ENGLISH RIVIERA
MON 15 SEPTEMBER	EDINBURGH SUMMER EXPLORER
THU 18 SEPTEMBER	WELSH MARCHES
TUE 23 SEPTEMBER	GOLDEN ARROW
FRI 26 SEPTEMBER	THE WHITE ROSE
MON 29 SEPTEMBER	GOLDEN ARROW EX WORCESTER
THU 2 OCTOBER	THE WHITE ROSE EX NORTHAMPTON
MON 29 SEPTEMBER	GOLDEN ARROW EX WORCESTER
SAT 15 NOVEMBER	THE CHRISTMAS WHITE ROSE
TUE 18 SEPTEMBER	THE CHRISTMAS WHITE ROSE
TUE 24 DECEMBER	THE BATH CHRISTMAS MARKET EXPRESS
THU 4 DECEMBER	THE BATH CHRISTMAS MARKET EXPRESS
SAT 6 DECEMBER	THE BATH CHRISTMAS MARKET EXPRESS
FRI 12 DECEMBER	THE BATH CHRISTMAS MARKET EXPRESS





STATESMAN

Britain's most celebrated train



PHOTO: Jamie Squibbs

BRITAIN'S MOST CELEBRATED TRAIN

From the elegantly refurbished carriages to our welcoming and professional team, everything about the Statesman is memorable. This is more than just a journey: The Statesman is an experience. As you step on board, you walk into a world of indulgence, luxury and style.

FOR MORE INFORMATION AND BOOKING VISIT: WWW.STATESMANRAIL.COM
OR FOR GENERAL ENQUIRIES CALL: 0345 310 2458



MIDLAND PULLMAN

First Class de luxe travel



THE ICONIC BLUE PULLMAN

The Midland Pullman was Britain's first high speed diesel-electric train running in the 1960's, offering the best possible at seat deluxe service and is remembered for the trains striking Nankin Blue livery, white jacketed stewards, and impeccable service... We are honoured to be running tours throughout Britain with out faithful revivals of this iconic service.

For more information and booking visit: www.midlandpullman.com
or for general enquiries call: 0800 038 5360



FOR FULL INFORMATION, TERMS & CONDITIONS AND ONLINE BOOKING
www.saphostrains.com

OR FOR GENERAL ENQUIRIES CALL
0800 038 5320

Saphos Trains Ltd, PO Box 83, St Erth,
Hayle, Cornwall TR27 9AD

EXPLORE MORE TRAIN JOURNEYS AVAILABLE FROM OUR SISTER COMPANIES



STATESMAN

Britain's most celebrated train

www.statesmanrail.com



**MIDLAND
PULLMAN**

First Class de luxe travel

www.midlandpullman.com